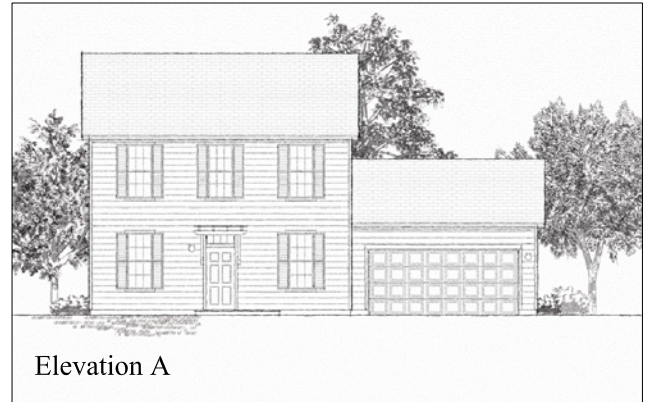
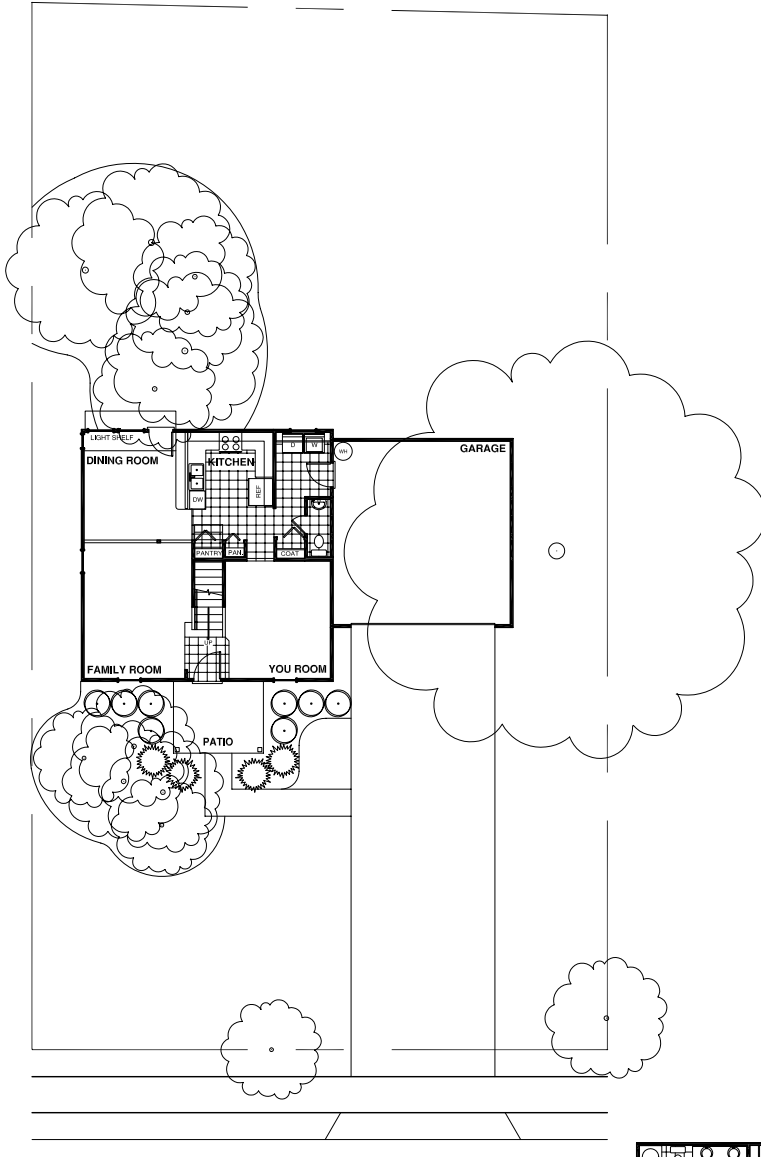
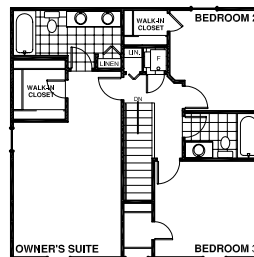


2032 Meadow View, San Marcos  
 Lot F131 — \$150,808



Elevation A

- House is nestled between trees on beautifully wooded lot.
- Texas State Univ. is a beautiful 2 mile bike ride on tree-shaded streets.
- Front porch is sheltered with trees.
- YOU room for whatever YOU need it for.
- Bigelow's famous \$400/yr cooling Guarantee.
- 1570 Square Feet, 3 bedrooms



Second Floor

Franklin Square Homes also include:

- 1380 - 1920 Sq. Ft.
- \$400/yr cooling guarantee
- 1- and 2 - story plans
- Priced from the \$140's
- 2 - 4 bedrooms, 2 1/2 bathrooms

Visit our model homes at **Blanco River Village**

(In San Marcos, on Hwy 21)

E-Mail : [jveltkamp@BigelowHomes.com](mailto:jveltkamp@BigelowHomes.com)



(512) 392-6700